

Researching the European Territories: expert collaboration and policy relevance

Brendan Bartley, NIRSA, NUI Maynooth
Presentation at MOPAN Conference
18 June 2009

Territorial Cohesion: From the ESDP to the Territorial Agenda of the EU

- ESPON (European Spatial Planning Observation Network) research programmes I & 2 on comparative territorial development in Europe
- Programmes are part of a larger process that commenced in the early 1980s with major milestones along the way:
 - *European Spatial Development Perspective (ESDP)* 1999,
 - *Leipzig Charter and Territorial Agenda for Europe (TAEU)* in 2007, and
 - *Green Paper on Territorial Cohesion* in 2008.



ESPON Concept

- Knowledge gap revealed by ESDP:
 - Spatial development trends
 - Spatial effects of sectoral policies
 - Need for integrated approach
 - Territorial effects on an enlarged EU



ESPON Programmes I & 2

- ESPON Programme 1
 - 2002-2006 (€17 million)
 - Interreg III Community Initiative
 - Programme on the spatial development of an enlarging European Union
- ESPON Programme 2
 - 2007-2013 (€47 million)
 - Structural Funds 2007-2013
 - Major elaboration of ESPON I; evidence informed policy and action; client need focus



ESPON & this Paper

ESPON 1

- idea of establishing across Europe a collaborative network of expertise on spatial development issues;
- identification of territorial trends on pan-European basis;
- search for reliable statistics in order to elaborate criteria and indicators for the monitoring of spatial development across the continent.

ESPON 2

Above and (d) the production of 'policy relevant' research.

This paper

- Reviews some findings of the ESPON programmes, and
- Reflects on the recent 'evolution' of ESPON in the context of the recent commitment of EU to the 'territorial dimension'

ESPON Projects 2002-2006

- Thematic **trends** projects
- Policy **Impact** Projects (TIAs)
- **Co-ordinating** cross-theme projects
- **Scientific** projects (briefing, network, support)
- Scientific **tools**
 - Database / navigator
 - Indicators (basic project based)
 - HyperAtlas & web-GIS
- **Publications**
 - Briefing reports
 - Scientific reports
 - Synthesis reports
 - Atlas



• Over 35,000 pages in total

ESPON
European Spatial Policy Observation Network

Lead Partners and Project Partners

35 ESPON 1 Projects

Transnational Project Groups with more than 280 partners involved

Covering 29 countries

Applied research - 3 levels approach (macro, meso, micro)

Key

- Lead Partners
- Project Partners

ESPON
European Spatial Policy Observation Network

Europe's changing context

Demography: aging population; immigration pressure and socio-cultural integration; impacts of aging on regional labour markets

BASELINE SCENARIO

2000

2015

2030

Median age (years)

1 2 3 4 5 6 7 8 9 10 11 12 13 14 15 16 17 18 19 20 21 22 23 24 25 26 27 28 29 30 31 32 33 34 35 36 37 38 39 40 41 42 43 44 45 46 47 48 49 50 51 52 53 54 55 56 57 58 59 60 61 62 63 64 65 66 67 68 69 70 71 72 73 74 75 76 77 78 79 80 81 82 83 84 85 86 87 88 89 90 91 92 93 94 95 96 97 98 99 100

ESPON
European Spatial Policy Observation Network

Territorial Balance & Connectivity

- **European Megalopolis** (Gottmann, 1976)
- **Golden Triangle** (Cheshire & Hay, 1989)
- **The Blue Banana** (Brunet, 1989)
- **Bunch of Grapes** (Kunzmann & Wegener, 1991)
- **The Pentagon** (ESDP, 1999)

ESPON
European Spatial Policy Observation Network

Strongest FUAs: Metropolitan European Growth Areas (MEGAs)

Ranking MEGAs

- Mass**
 - Population
 - GDP
- Competitiveness**
 - GDP
 - Top 500 Companies
- Connectivity**
 - Passengers at airports
 - Multimodal accessibility
- Knowledge basis**
 - Education level
 - R&D share of employment

Strongest MEGAs within or close to the Pentagon area

The **'pentagon'**: a single zone of global economic integration (London, Paris, Milan, Munich and Hamburg)
50% of GDP
40% of population
20% of area

ESPON
European Spatial Policy Observation Network

Spatial structure of Europe

European spatial structure based on population density and accessibility to all Metropolitan European Growth Areas (MEGA)

- inner central area
- outer central area
- intermediate area with agglomeration tendencies
- intermediate area with low density
- peripheral area with agglomeration tendencies
- peripheral area with very low density
- no data

Note: The types of spatial structure are based on the access to central places within 50 km and the population density.

- MEGAs and transnational Functional Urban Areas (FUAs)

Note: The typology of FUAs was elaborated according to their functions importance regarding population, transport, services, industry, knowledge, innovation, training and administration. These levels are each identified: Metropolitan European Growth Areas (MEGAs), transnational Functional Urban Areas (FUAs) and regional FUAs.

Source: Accessibility Model of the BER, BER Spatial Accessibility System of Europe, ESPON-Phase 1.1.1

ESPON
European Spatial Policy Observation Network

Composite Results Maps

The core and the periphery

Potential accessibility by road 2001 (ESPON space = 100)

- less than 20
- 20 to below 40
- 40 to below 60
- 60 to below 80
- 80 to below 100
- 100 to below 120
- 120 to below 140
- 140 to below 160
- 160 to below 180
- 180 and more

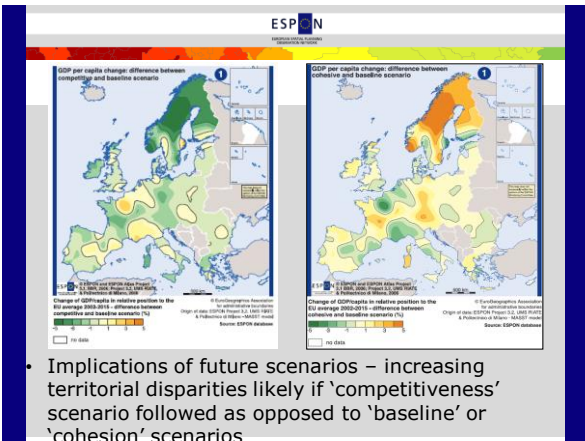
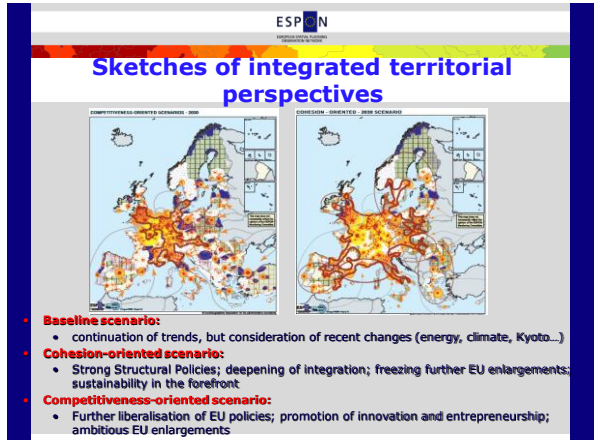
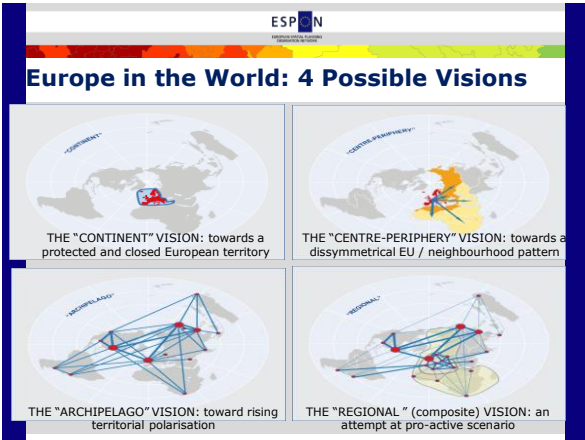
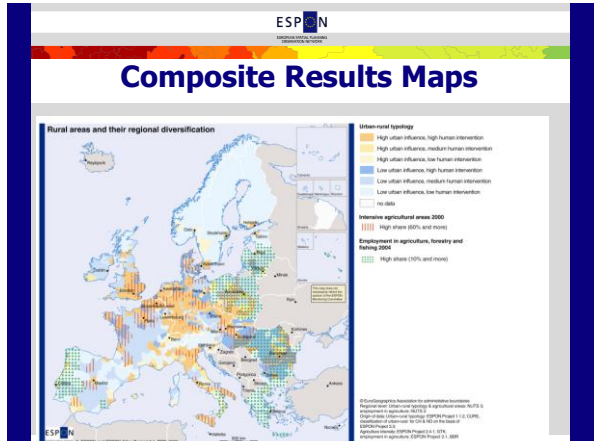
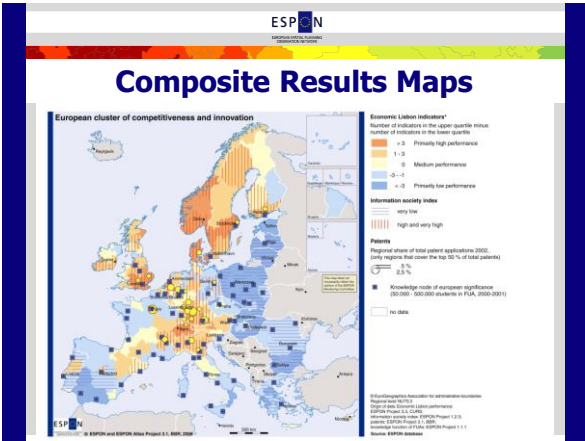
Regional GDP in % of EU25 average 2003

- less than 75
- more than 75

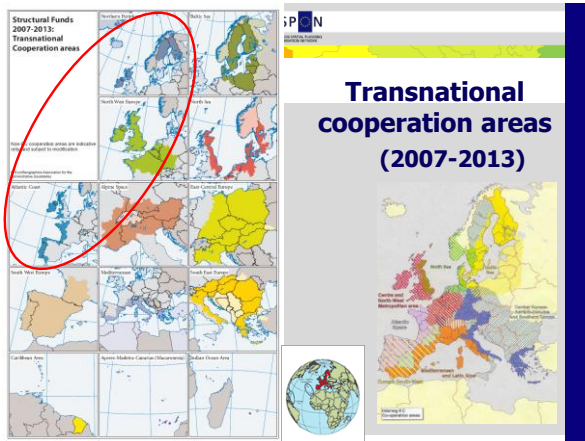
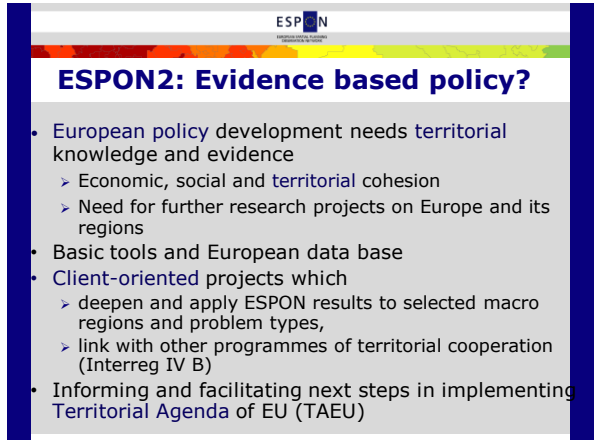
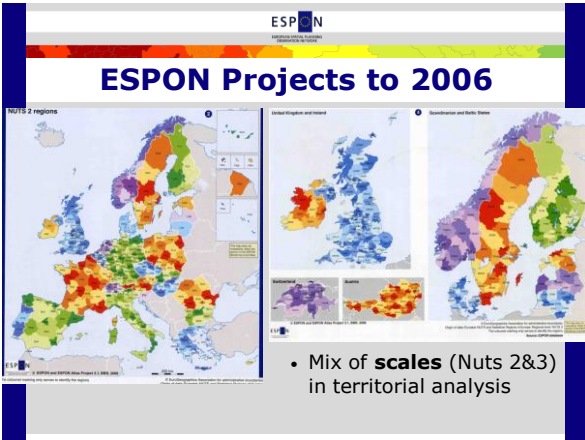
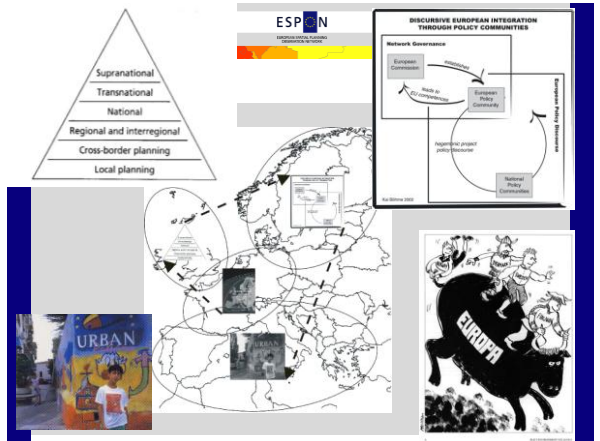
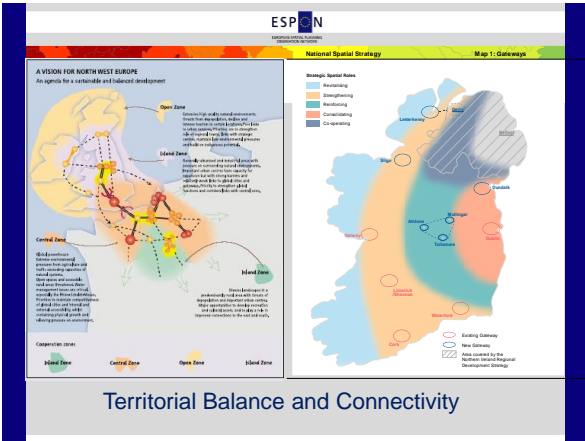
Monetary network

- no data

Source: ESPON-Phase 1.1.1



- ### Use of ESPON 2006 Results
- ESPON results widely available as published
 - single reports
 - synthetic reports and
 - ESPON atlas
 - Results have found their way into the European policy discussions and
 - e.g. Third and Fourth Cohesion Reports and
 - Territorial Agenda / TSP document
 - Green Paper on Territorial Cohesion
 - Incorporated into national / regional strategies of Member States?
 - NSS & RDS in Ireland



ESPON Network

- EU Commission / Monitoring Unit
 - Member states, observer states
- Coordination Unit: Luxembourg (CU)
- European Contact Points (ECPs)
- Transnational Project Groups
 - Lead Partners
 - Project Partners



ESPON 2 (2007-13)

Mobilising diverse territorial potentials of the regions for economic growth

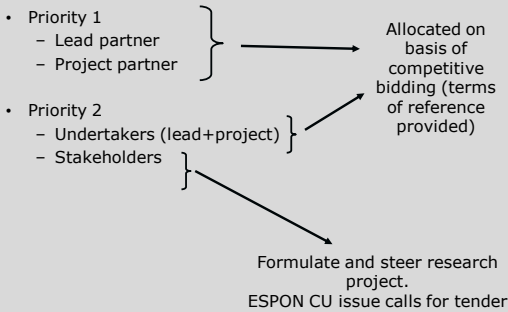
Programme under SF 2007-2013

(Objective III, territorial cooperation, networking)

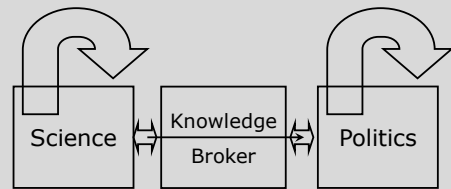
Five categories of Research

1. Evidence & knowledge on territorial development and cohesion (applied research projects)
2. Targeted analytical projects (entirely client driven)
3. Monitoring and scientific platform (core indicators, TIA and database)
4. Communication and networks of stakeholders
5. Technical and analytical support

ESPON Project Allocation

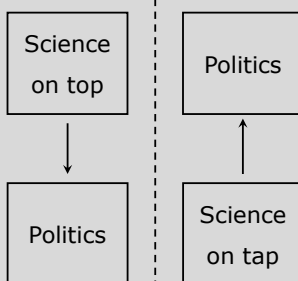


Science and politics as two distinct self-referential sub-systems



Böhme/Schön: DISP 2006

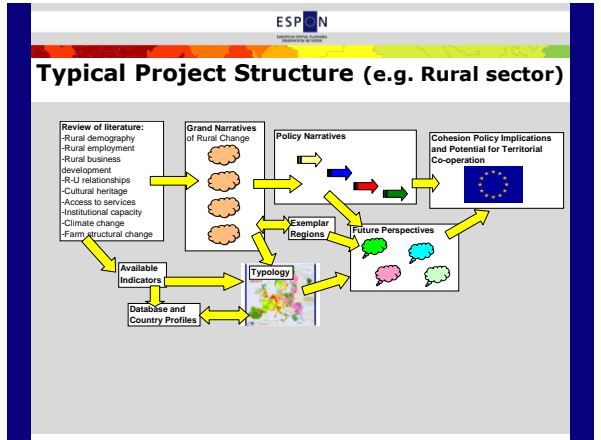
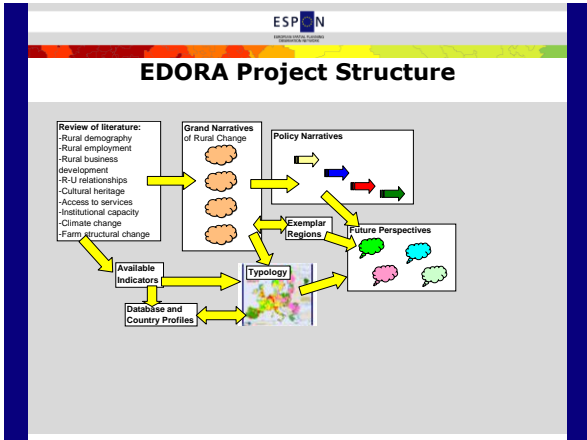
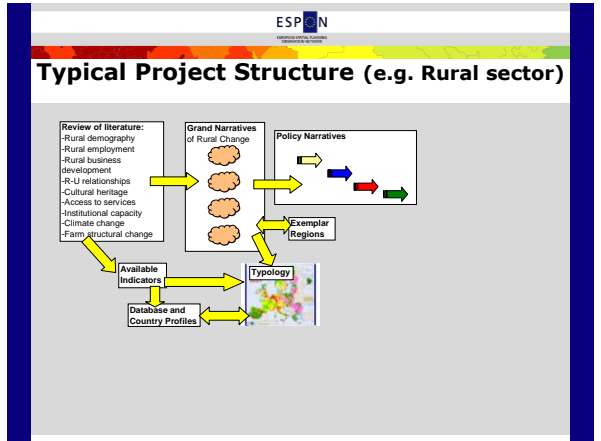
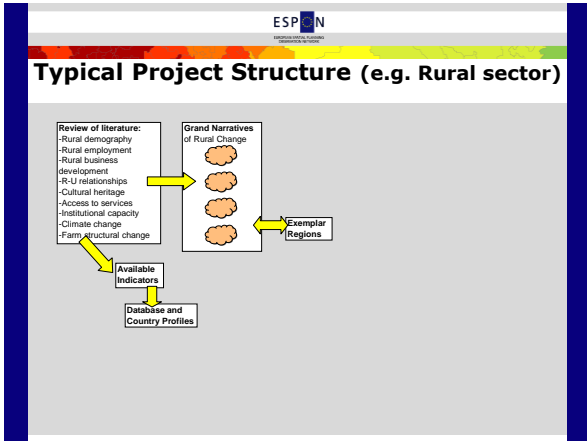
Evidence-based policy: Science on top or on tap?



Simin Davoudi: DISP 2006

Typical Project Structure (e.g. Rural sector)

- Review of literature:
- Rural demography
 - Rural employment
 - Rural business development
 - R-U relationships
 - Cultural heritage
 - Access to services
 - Institutional capacity
 - Climate change
 - Farm structural change



ESPON
European Spatial Observatory Network

Thank you for your attention

The ESPON Atlas maps and all reports are available at: www.espon.eu

Questions welcome!