

## "Ireland's Haunted Landscape:

From the Deserted Homes of the  
'Faithful Departed' to the Social  
Desert of Post Celtic Tiger  
Schizmogogenesis"

## Why focus on the house?

- The house as a way in to the challenges of rebuilding, and of putting our house in order.
- Respond to the hegemony of economics, that has forgotten its original concern with society as collective household.
- 'sub-prime' financialization bubble

## Ghosts of the Faithful Departed

David Creedon





27 - Puerto Rieito 30' x 20'



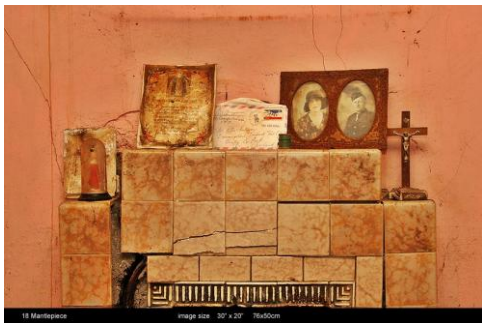
08 Red Bedroom image size 30x 15 inches 76x38cm



11 Sings image size 30' x 20' 76x50cm



16 Clooneygerman image size 30' x 20' 76x50cm



18 Montepizzo image size 30' x 20' 76x50cm



23 - pope Paul 30x18 inches 76x45cm



- Heidegger: 'Being is dwelling'
- Jung: 'House is a mirror of psyche'
- Benjamin: 'Interiors, dreamworlds and traces'
- Baudelaire: 'to capture the eternal in the fleeting moment'
- Adorno: 'the beautiful & the sublime'
- Joyce: 'epiphanies, and metempsychosis'

- "...the interior contains the residue of a collective dreamworld..." (Benjamin)
- "...dreams: the royal road to the unconscious" (Freud)
- "... The house, the interior, as mirror of the psyche & archetypes of the collective unconscious (Jung)
- Use the residue in the interiors of houses as 'material' with which to conduct "political dream analysis" of Ireland's collective unconscious.
- "Each epoch not only dreams the next, but also, in dreaming, strives toward the moment of waking. ... In the convulsions of the commodity economy we begin to recognize the monuments of the bourgeoisie as ruins even before they have crumbled."- Walter Benjamin

## Portals to other dimensions



Hestia



Hermes



## Schism & Transition

- The Hearth
- Maternal archetype
- Stability
- Hestia
- The home
- The gift relation
- Creation of values by transsubstantiation & sublimation
- Empty space
- Trickster archetype
- Liquefaction
- Hermes
- The market
- The theft relation
- Annihilation of values by financialization

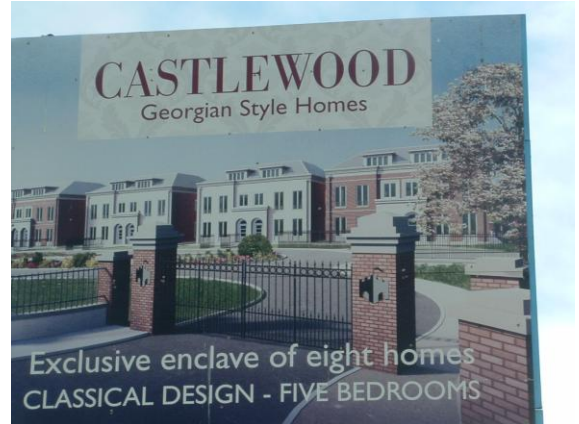


'Haunted by the ghosts of dead religious beliefs' (Weber)



'Haunted by a lack of ghosts' (Frye)





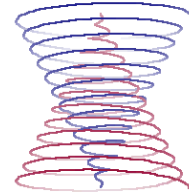
## Fall of the House of Berre

- Dun bui /
- Dunboy/
- Puxley's Mansion/
- 7star Hotel/
- Abandoned site



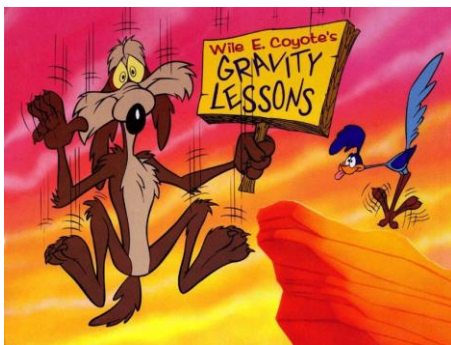
## Historical Recurrences: 'Turning and turning in the widening gyre'

- "...Things fall apart /  
The centre cannot hold /  
Mere anarchy is loosed upon  
the world ...  
And what rough beast /  
its hour come round at last/  
Slouches toward Bethlehem to  
be born?"  
(Yeats: The  
Second Coming 1921)



... and what rough beast...?

- Trickster  
Archetype
- Lycanthropy
- Appetite for  
infinity



### Willie Coyote & Road Runner: A collective Representation of the tragi-comedy of modern recurrence & catastrophe



- Desire (Coyote) chases obscure and fetishized goals of progress & abundance (Roadrunner) through desert (modern civilization) Cunning & technology rebound on Coyote -catastrophe! Falls (how far?) Coyote learns nothing, and begins the cycle all over again ...

He stands in the doorway of his house  
A ragged sculpture of the wind,  
October creaks the rotted mattress,  
The bedposts fall. No hope. No lust.  
The hungry fiend  
Screams the apocalypse of clay  
In every corner of this land.

(P. Kavanagh 'The Great Hunger' 1942)



- "...what branches grow out of this stony rubbish?"

T.S Eliot  
The Waste Land



### 'Schizmogogenesis'

- Ireland: second most unequal society in the OEDC
- Celtic Tiger has deepened and sharpened social divisions.
- Globalization & regressive fiscal policy means no resources to intervene; Ireland leads race to the bottom away from 'social Europe'

### Bateson: 'Schizmogogenesis'

- Etiology of social conflict.
- Developed in 1930s, to account for Europe's downward spiral to modern barbarism (fascism, communism) and catastrophe (WWII, holocaust).

- Symmetrical schismogenesis: competitive relationship between categorical equals (e.g., rivalry, arms race).
- Complementary schismogenesis: between categorical unequals (e.g., dominance and submission, gender, race and class conflict).
- Temporary inversions and reversal of roles can ease tensions in complimentary schismogenesis (e.g. carnival, elite 'populism').
- Reciprocal & complimentary actions can ease tension in symmetrical schismogenesis (e.g. magnanimity, gracious gift-giving)

## External and internal enemies

- "Schismogenesis can be restrained by by factors which unite the two groups either in loyalty or opposition to some outside element, e.g. a symbolic individual, an enemy people"
- [e.g.s nationalism, racism, anti-semitism, -scapegoats, "thieves of enjoyment" (Zizek) - 'jews', 'immigrants' and other 'vermin'- "strictly no scobies!" (last days of the Celtic Tiger)]

## Turning the spiral around: the gift of social housing

- Ireland has 20,000 unoccupied housing units.
- 'Toxic assets' owned by developers, owed to banks, under-written by taxpayers.



## The gift relation (Mauss)

- The gift relation: the most fundamental social institution, anthropologically universal.
- The gift as formative and constitutive of social relations, and as the foundation of civilization.
- Anthropologically universal principle of the gift relation can be adapted to become the core integrating principle of modern society.

## The grammar of the gift

1. Reciprocity: (the gift is given; the gift is received; and the gift is returned)
2. Obligatory: (the recipient of the gift is obliged to return the gift; and the recipient of the reciprocated gift becomes obliged to give again)
3. Incremental: the gift must be reciprocated by a gift of (at least) equal (and preferably greater) value, thereby amplifying the reciprocal and obligatory dimensions of social relations.

## The gift: A 'total social fact'

- "The gift is a total social fact, an event that has significance that is at once social and religious, magic and economic, utilitarian and sentimental, juridical and moral"
- (R. Titmuss -architect of the NHS, the core institution of the British Welfare State)

## Gift, Society, Home

- Modern society as welfare state is a collective home structured by the grammar of the gift relation ... a total system of gift relations wherein 'gifts' of fair wages, housing, health care, education and social security, are exchanged for labour, political legitimation, loyalty, duty, civil responsibility and social harmony. ...

## 'Neighbourhood' ?



## A poisoned gift?

- The gift [of the house] to reverse the vicious circle, restore equilibrium to the spiraling gyre.
- But the poisoned gift (witch's apple / the counterfeit coin) causes harm to the recipient.
- Houses were not built as homes, but in isolation, without services, infrastructure or connections- 'neighbourhoods' become nightmares, future 'rurban ghettos'