

Oct 07 | May 08

MAYNOOTH

FILM FOR ALL

Kildare
County Council




NUI MAYNOOTH
Coláiste na hÉireann Mh. Nuad

access > CINEMA

the arts
Council
comhairle
ealaíon

**KILDARE COUNTY COUNCIL ARTS SERVICE IN PARTNERSHIP WITH
THE CENTRE FOR MEDIA STUDIES, NUI MAYNOOTH PRESENTS
MAYNOOTH FILM FOR ALL FILM CLUB.**

All screenings in the John Hume Building JHL1 @ 7.30pm

Kildare
County Council



MEMBERSHIP APPLICATION

Applicant's name:

Telephone:

Email:

Library reg. no.:

Pricing structure:

Full Membership: €45 per season

Concessions: €20 per season (students, OAPs)

Guests: €7 per viewing (includes €1 daily membership)

Membership type (please tick box ✓)

Full Membership Concession

Cheques or postal orders to be made payable to Kildare County Council.

Completed registrations with full remittance should be returned to:

**Maynooth Film for All,
Maynooth Community Library,
Main St, Maynooth,
Co Kildare.**

Tel: 01 6285530

Email: maynoothlib@kildarecoco.ie

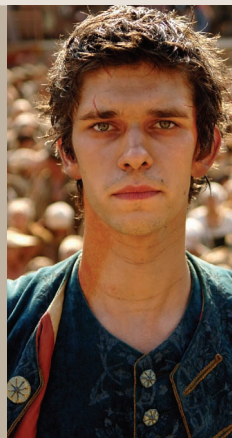
Web: www.kildare.ie/library/maynooth

**If not a member please contact the library or log onto:
www.kildare.ie/library/maynooth**

PERFUME | THE STORY OF A MURDERER (15A)

Director: Tom Tykwer | Germany/ France/Spain | 2006 | 147 minutes
Starring: Ben Wishaw, Dustin Hoffman, Alan Rickman, Rachel Hurd-Wood
Language: English
Screening: Thursday, 11th October 2007

In adapting Patrick Süskind's phenomenally successful 1985 novel, German director Tom Tykwer (Run Lola Run) succeeds against expectations in conjuring up the vivid smells and sights of the book's 18th century setting, thanks especially to the film's evocative score. British actor Ben Wishaw offers up a seductive performance as the abused orphan child who becomes a precociously talented apprentice perfumier and a feared serial killer.



VOLVER (15A)

Director: Pedro Almodóvar | Spain | 2006 | 120 minutes
Starring: Penélope Cruz, Carmen Maura, Lola Dueñas, Blanca Portillo, Yohana Cobo, Chus Lampreave
Language: Spanish
Screening: Thursday, 15th November 2007

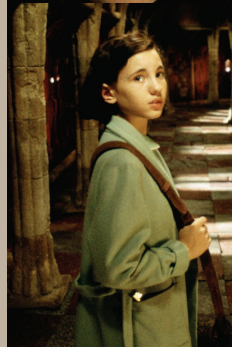
Returning to his native La Mancha, Pedro Almodóvar directs Penélope Cruz, who has blossomed into one of her generation's finest actors; as Raimunda, a hard-working woman with a teenage daughter, a feckless husband, and a circle of supportive women who rally around when a violent act changes her life. A visually stunning melodrama.



PAN'S LABYRINTH | EL LABERINTO DEL FAUNO (16)

Director: Guillermo del Toro | Mexico/Spain/USA | 2006 | 119 minutes
Starring: Mirabel Verdú, Sergi Lopez, Ivana Baquero, Doug Jones
Language: Spanish
Screening: Thursday, 6th December 2007

In Francoist Spain of 1944, young Ofélia must accompany her pregnant mother to the house of her stepfather, the sadistic Captain Vidal, who is intent on crushing the Republican rebels who still hold out in the forested hills. Ofélia finds a labyrinth near the house and Pan, its grotesquely fawnlike keeper, sets her three dangerous tasks.



CLIMATES | IKLIMER (CLUB)

Director: Nuri Bilge Ceylan | Turkey / France | 2006 | 101 minutes
Starring: Ebru Ceylan, Nuri Bilge Ceylan, Nazan Kesal
Language: Turkish
Screening: Thursday, 24th January 2008

Man was made to be happy for simple reasons and unhappy for even simpler ones - just as he is born for simple reasons and dies for even simpler ones... Isa and Bahar are two lonely figures dragged through the ever-changing climate of their inner selves in pursuit of a happiness that no longer belongs to them.



Screenings may be subject to change.

THE FAMILY FRIEND | L'AMICO DI FAMIGLIA (CLUB)

Director: Paolo Sorrentino | Italy | 2006 | 110 minutes
Starring: Giacomo Rizzo, Laura Chiatti, Fabrizio Bentivoglio
Language: Italian
Screening: Thursday, 14 February 2008

In a small town, an ageing loan shark, who lives with his mother, is undone by greed and his fatal attraction to a beautiful young woman... A highly original, gripping and occasionally grotesque suspense drama, *The Family Friend* intensely explores extreme emotions, whilst playing out a clever crime confidence-trick plot.

THIS IS ENGLAND (18)

Director: Shane Meadows | United Kingdom | 2006 | 100 minutes
Starring: Thomas Turgoose, Stephen Graham, Jo Hartley, Andrew Shim
Language: English
Screening: Thursday, 6th March 2008

Roland Rat, Margaret Thatcher; Rubik's Cubes... It's 1983, and as schools breaks up for summer, 12-year-old Shaun, whose dad died in the Falklands War, is adopted by a gang of skinheads. Shaun enjoys parties, girls & snappy dressing, until an older, overtly racist skinhead returns home from prison.

GABRIELLE (CLUB)

Director: Patrice Chereau | France | 2005 | 90 minutes
Starring: Isabelle Huppert, Pascal Gregory, Claudia Coli
Language: French
Screening: Thursday, 10th April 2008

Set in early twentieth-century France's opulent belle époque, *Gabrielle* is the tale of a marriage that unravels and spins wildly out of control. Adapted from Joseph Conrad's short story, *The Return*, Chéreau's new film boldly explores the operatic emotions hidden just below the surface of bourgeois decorum, and confronts head-on the perils and pitfalls of a stable marriage.

LIGHTS IN THE DUSK | LAITAKAUPUNGIN VALOT (CLUB)

Director: Aki Kaurismäki | Finland | 2006 | 78 minutes
Starring: Janne Hyytiäinen, Maria Jarvenhelmi, Maria Heiskanen, Ilkka Koivula.
Language: Finnish
Screening: Thursday, 1st May 2008

The predictably rewarding final instalment of Aki Kaurismäki's *Loser Trilogy* follows its predecessors' themes of unemployment and homelessness with that of loneliness. Shy nightwatchman Koistinen (Janne Hyytiäinen) is virtually ostracised by his fellow security guards and lives alone in a modest apartment until he meets Mirja (Maria Järvenhelmi), who seems to respond sympathetically to his slightly old-fashioned, even gentlemanly manner.

Screenings may be subject to change.

